

FLEX MANUAL SOFA



- ✓ **Mechanics compliant with the safety requirements of NF 1129-1 and 2 of 1995** for folding beds
- ✓ 2 year legal warranty of conformity and manufacturer's warranty: gas cylinders 18 months from date of manufacture Slatted bed base 2 years from date of manufacture.
- ✓ Allows you to be established in the very rigorous world of hotels and residences open to the public.

HIGH COMFORT RETRACTABLE SOFA BED MECHANISM WITH UNDER SEAT

Technical Description

Dimensions: 140/160 - Mattress 18/20 cm
 2 steel frames 40X40X2mm with crosspiece 20X20
 Independent cradle in 4 mm with sofa

Flange connection anti-collapse bar
 20 mm axle on Cast-Steel bearing Ball bearing

Mattress stop in 4 mm
 Gas cylinders with retarder on each side
 Steel cylinder covers
 4 mm high cradles
 3 Cradle stiffening crosspieces
 Glued laminated slats, end cap on metal frame
 No fixation
 Removable steel feet with stainless steel round bar
 Slatted frame base on seat hinge
 Mattress 20 Kg - Total loaded weight 115 Kg

The "FLEX" foldaway sofa bed mechanism is self-supporting, no need to drill on the floor or on the wall. No fixing is necessary thanks to **Lift Security © technology**.

Use the mechanism to build your furniture, not the other way around.

The gas cylinders which ensure the opening and closing are not visible. Possibility to completely hide the frame.

With the FLEX mechanism you will be able to create a Murphy bed that meets all your requirements or requests from your customers.

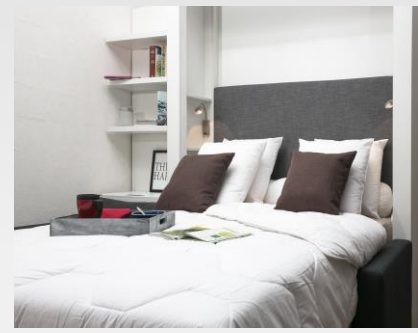
The retractable sofa bed mechanism "FLEX" can accommodate mattresses from **15 kg minimum to 20 kg maximum** with a maximum thickness of **19 cm**. The "FLEX" retractable sofa bed mechanism can be available in **140cm and 160cm**.

The weight of the facades is **max 41kg / mini 39kg in 140cm and max 45kg / mini 39kg in 160cm**.

The weight of the mechanism is **112 kg in 140cm and 120 kg in 160cm**.

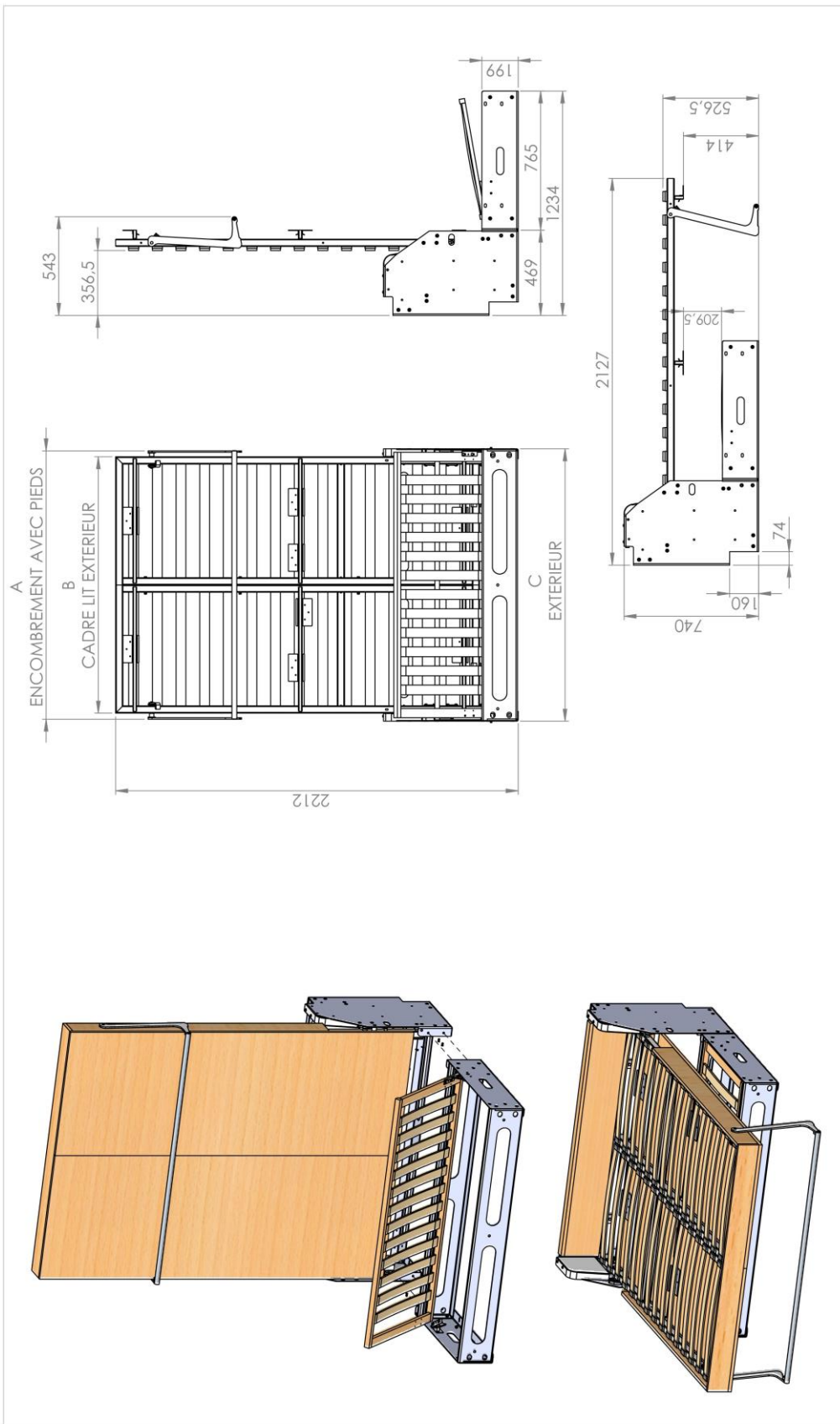
The installation must be carried out by a qualified person to carry out the installation and the adjustments, the incorrect installation of this product can involve risks of injuries, a bad assembly and / or installation cannot in no case engage our responsibility.

An assembly manual is attached to each mechanism.



Contact-us at : 07.78.51.12.00 / by mail : contact@liftsecurity.net
 From Monday to thursday to 9.30 a.m. to 12 p.m. and 2 p.m. at 6 p.m. - Friday to 9.30 a.m. to 11 a.m.
 For any price request, we thank you for completing our contact form via our site.
 (We do not communicate any prices by phone)

Patents, models, brands, subject to international filing



liftsecurity

Matière : Masse : 203857.94g Dessiné par Florent Ruffin
 Alexis PAOUTOFF créateur et inventeur.
 Copie interdite en application du code de la propriété industrielle.
 REF: 24/10/2021
 Echelle : 1:20
 Fichier: FLEX - LIT COMPLET
 CONFIGURATION : Canapé 1600 PB fermé

	2
	3

Ce document est la propriété de Alexis PAOUTOFF, il ne peut être utilisé, reproduit ou communiqué sans son autorisation.