

FLEX SINGLE MANUAL



- ✓ **Mechanics compliant with the safety requirements of NF 1129-1 and 2 of 1995** for folding beds
- ✓ 2 years legal warranty of conformity and manufacturer's warranty: gas cylinders 18 months from date of manufacture Slatted bed base 2 years from date of manufacture.
- ✓ Allows you to be established in the very rigorous world of hotels and residences open to the public.

Technical Description

Dimensions: 140/160 - Mattress 18/20 cm
 2 steel frames 40X40X2mm with crosspiece 20X20
 Independent cradle in 4 mm
 Flange connection anti-collapse bar
 20 mm axle acier on Cast-Steel bearing Ball bearing supports a weight of 12000 N
 Mattress stop in 4 mm
 Gas cylinders with retarder on each side
 Steel cylinder covers
 4 mm high cradles
 3 Cradle stiffening crosspieces
 Glued laminated slats, end cap on metal frame
 Floor / wall fixing
 Removable steel feet with stainless steel round bar
 Mattress 20 Kg - Total loaded weight 115 Kg

HIGH COMFORT RETRACTABLE MECHANISM

The "**FLEX**" Murphy bed mechanism is self-supporting, Mandatory fixing to the ground. Use the mechanism to build your furniture, not the other way around.
 The gas cylinders which ensure the opening and closing are not visible. Possibility to completely hide the frame.

With the **FLEX** mechanism you will be able to create a Murphy bed that meets all your requirements or requests from your customers.

The "**FLEX**" Murphy bed mechanism is available in 2 versions: **140x200 and 160x200**

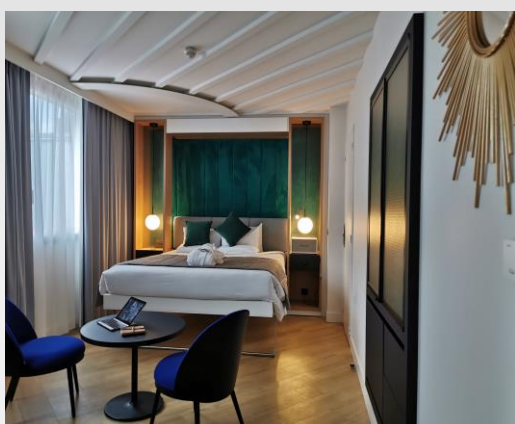
It can accommodate mattresses from **15 kilos minimum to 18 kilos maximum for the 140** and from **16 kilos minimum to 20 kilos maximum for the 160** with a maximum thickness of 19 cm.

The weight of the mechanism is **75 kg in 140cm and 78 kg in 160cm**

The weight of the mechanism is **112 kg in 140cm and 120 kg in 160cm**.

The installation must be carried out by a qualified person to carry out the installation and the adjustments, the incorrect installation of this product can involve risks of injuries, a bad assembly and / or installation cannot in no case engage our responsibility.

An assembly manual is attached to each mechanism.



Contact-us at : 07.78.51.12.00 / by mail : contact@liftsecurity.net

From Monday to Thursday to 9.30 a.m. to 12 p.m. and 2 p.m. at 6 p.m. - Friday to 9.30 a.m. to 11 a.m.

For any price request, we thank you for completing our contact form via our site.

(We do not communicate any prices by phone)



Patents, models, brands, subject to international filing

www.liftsecurity.net

