

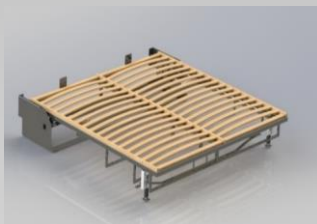
HYBRID SINGLE ELECTRIC MECHANISM



LIFTSECURITY is the only mechanism in the world for a Murphy bed equipped with two electric motors. Thought and designed to guarantee safety and robustness above all.

Our **HYBRID** models assure you a free daily use, without constraint and without risk of breakdown.

Our commitments: **Safety, Comfort** and **Durability**



- ✓ Mechanics compliant with the safety requirements of NF 1129-1 and 2 of 1995 for folding beds - with a 10-year warranty - allowing it to be established in the very rigorous world of hotels and residences open to the public.
- ✓ The installation must be carried out by a qualified person to carry out the installation and the adjustments, the incorrect installation of this product can involve risks of injuries, a bad assembly and / or installation cannot in no case engage our responsibility. An assembly manual is attached to each mechanism.

SINGLE HYBRID RETRACTABLE BED MECHANISM GREAT COMFORT

This is **the upscale LIFT SECURITY**. Mechanism is **independent** of the unit avoiding constraints and freeing your creativity.

Your wall bed equipped with LIFT mechanism SECURITY "**HYBRID**" can neither be down or remain closed.

It is equipped **with 2 electrics LINAK** jacks (No. 1 worldwide health), plus a **backup battery** allowing to open and close up to 20 rotations without electricity power, plus a wireless remote and a button up / down, supplemented by two backup gas jacks for a manual open/close (easy replacement by the front).



Wall bed mechanism LIFT SECURITY « HYBRIDE » will still work.

The wall bed mechanism "HYBRID" can support a **high quality bedding with mattresses from 20 to 60 kilos** with a maximum thickness **of 25 cm**.

The wall bed mechanism "HYBRID" is provided for larger widths **from 140 to 180 cm or even 200 cm**. The frontage weight is **max 58 kg / mini 54kg for 160cm and 65kg maxi / mini 58kg for 180cm**.

Thanks to the self-supporting cradle (floor fixing are required) the mechanism is independent from furniture which allows you to perform your projects around the mechanism, express your creativity and please your customers.

Technical Description

Dimensions: 140/160/180/200 - Mattress 23/25 cm
2 steel frames 40X40X2mm with crosspiece 20X20
Independent cradle in 4 mm

Flange connection anti-collapse bar

20 mm axle on Cast-Steel bearing Ball bearing

Mattress stop in 6 mm

Front cross member to receive a plinth

2 emergency gas cylinders

2 Electric Motors of 8000N

Backup battery / Emergency button with wires

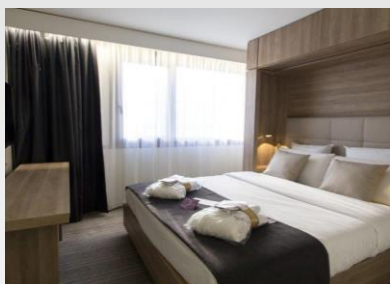
Wireless remote control - Bluetooth

Floor / wall fixing

Retractable feet where stainless steel bar on the front

Removable slatted frame base

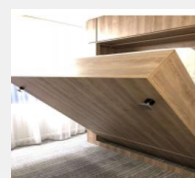
Mattress 30/60 Kg / Total load weight 160 Kg



**2 OPTIONS
FEET
AVAILABLE**



Foot bar



Retractable feet



Contact-us at : 07.78.51.12.00 / by mail : contact@liftsecurity.net

From Monday to thursday to 9.30 a.m. to 12 p.m. and 2 p.m. at 6 p.m. - Friday to 9.30 a.m. to 11 a.m.

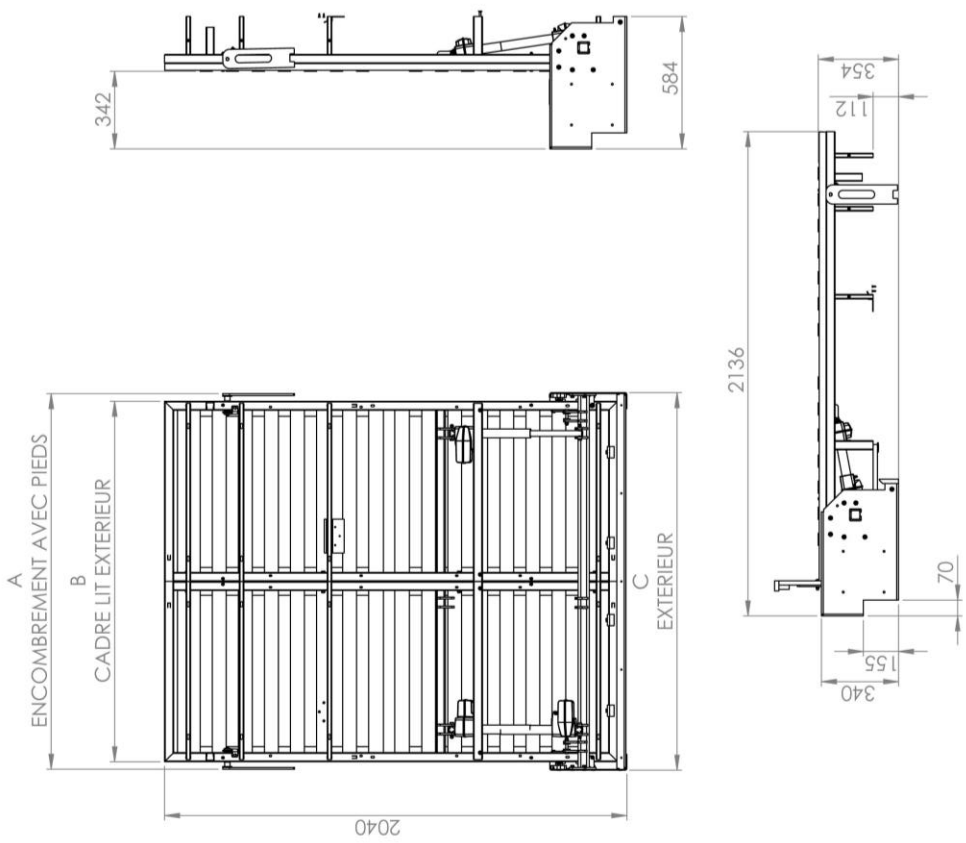
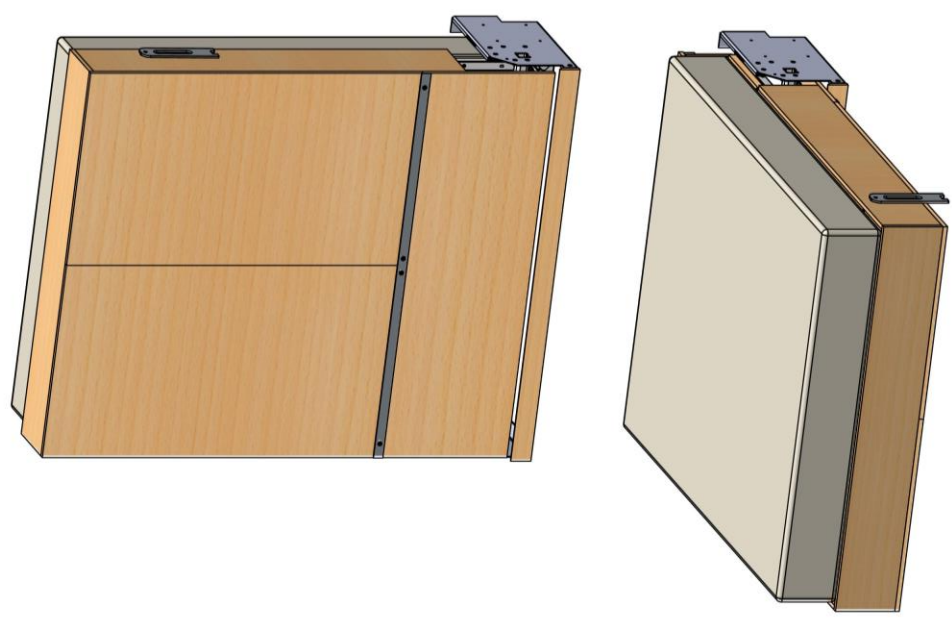
For any price request, we thank you for completing our contact form via our site.

(We do not communicate any prices by phone)



Patents, models, brands, subject to international filing

www.liftsecurity.net



	A	B	C
1400	1455	1390	1465
1600	1655	1590	1665
1800	1855	1790	1865
2000	2055	1990	2065



Matière :
Alexis PAOUTOFF créateur et inventeur.
Copie interdite en application du code de la propriété industrielle.

Masse : g

Dessiné par Florent Ruffin

28/10/2021

Echelle :
1:20

REF: HYBRIDE SIMPLE - LIT COMPLET

CONFIGURATION : 1400 / 1600 / 1800 / 2000 HYBRIDE ouvert / fermé

1

5

Nota: Les dimensions sont données à titre indicatif. Nous vous conseillons d'attendre le mécanisme pour débiter le meuble.

Ce document est la propriété de Alexis PAOUTOFF, il ne peut être utilisé, reproduit ou communiqué sans son autorisation.